

2825 EASTLAKE

2825 EASTLAKE AVE E, SEATTLE, WA 98102



BLUME COMPANY
REAL ESTATE

FOR LEASE



OFFICE SPACE AVAILABLE

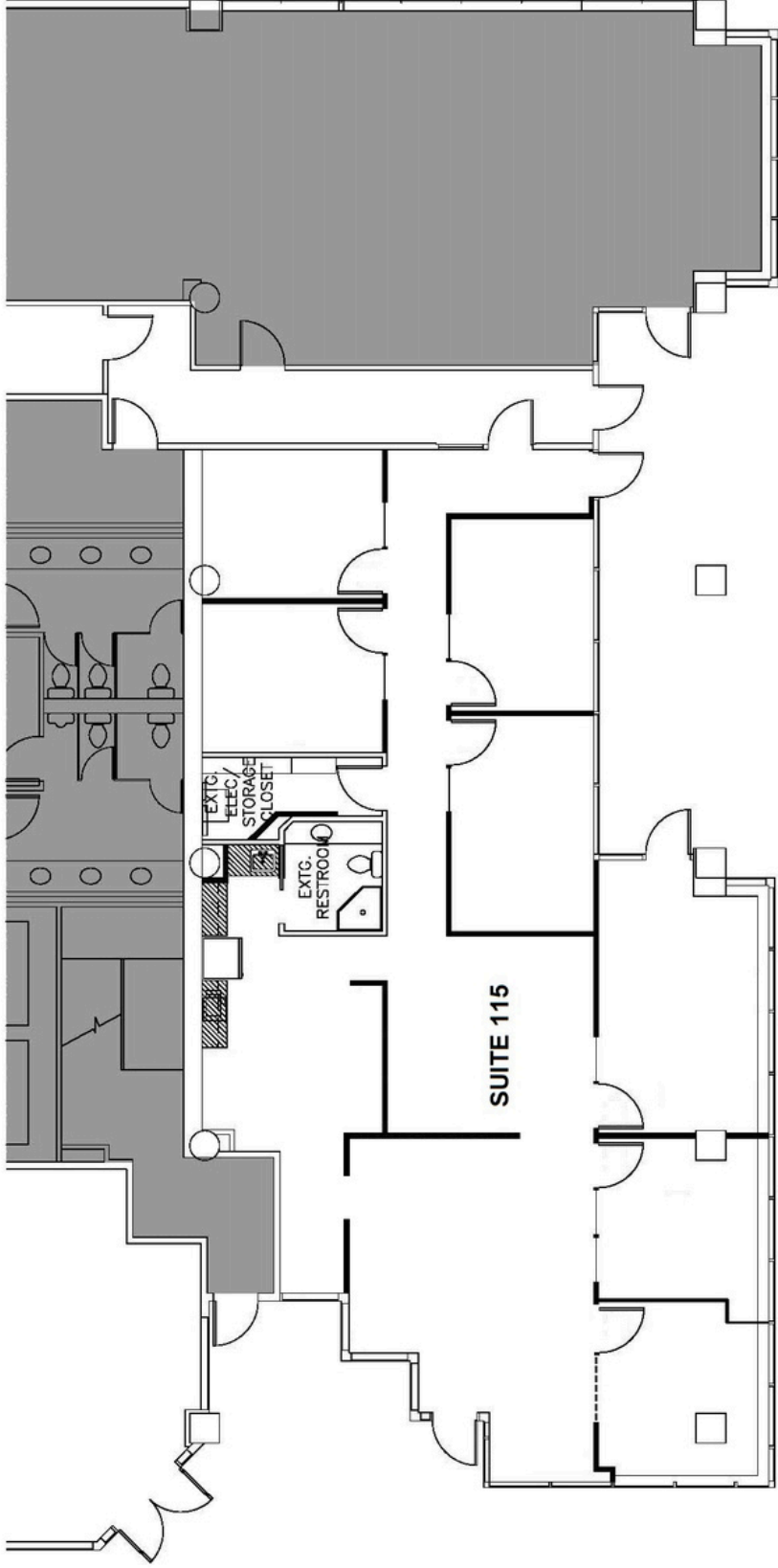
SUITE 115 - 2,574 SQ FT AVAILABLE APR 1, 2025

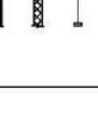
SUITE 205 - 650 SQ FT AVAILABLE

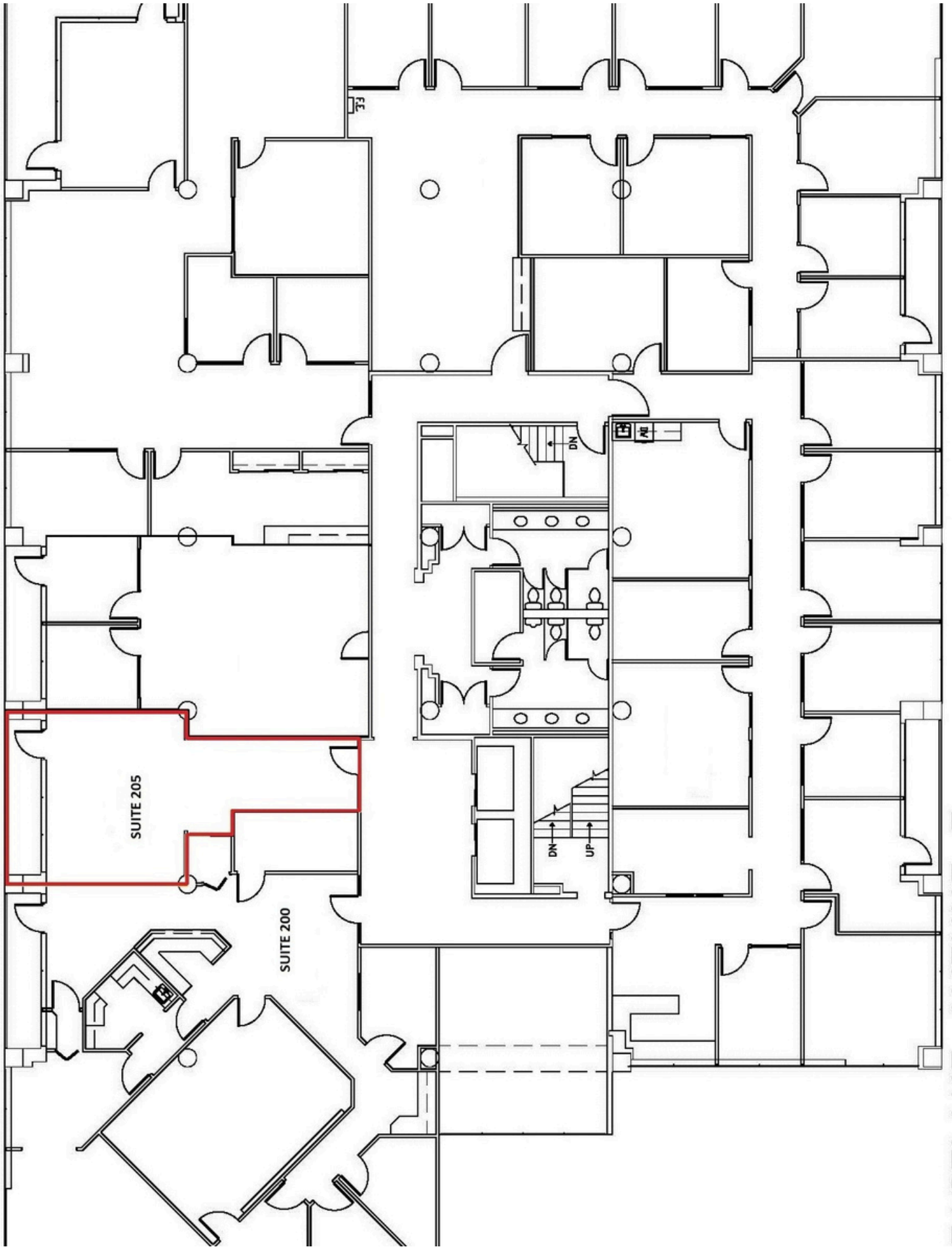
SUITE 320 - 1,936 SQ FT AVAILABLE JUL 1, 2025

EXCELLENT EASTLAKE CORRIDOR LOCATION OVERLOOKING LAKE UNION. STEPS FROM PUBLIC KAYAK ACCESS AT E ALLISON ST, A CITY OF SEATTLE DESIGNATED SHORELINE STREET END LOCATION. EASY WALK TO STARBUCKS, LITTLE WATER CANTINA, PECADO BUENO, LE FOURNIL FRENCH BAKERY & CATERING, SUSHI KAPPO TAMURA, OTTER BAR & BURGER, JOHNNY MO'S PIZZERIA AND SON OF A BUTCHER.

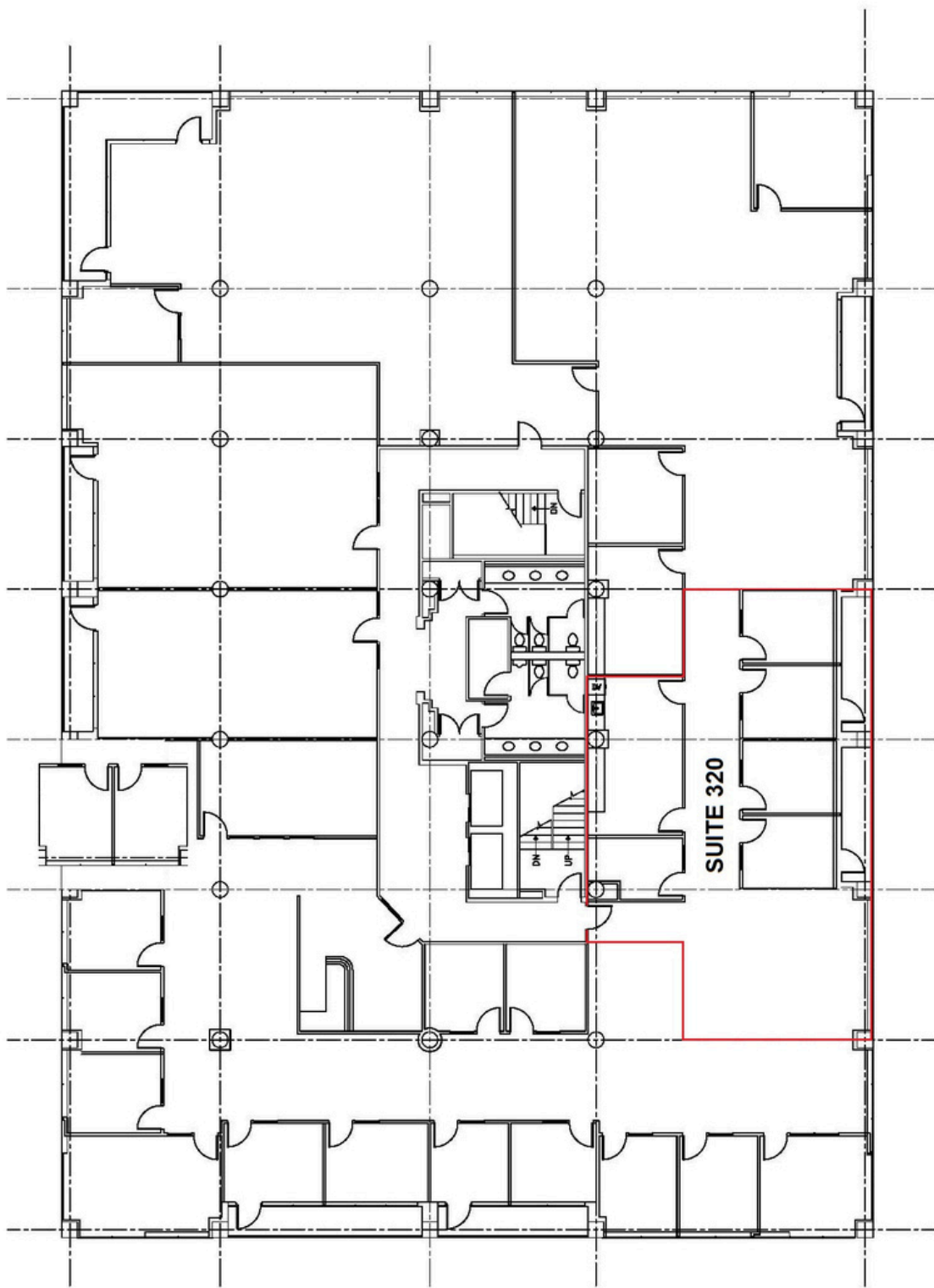
- SWEEPING LAKE UNION VIEWS
- STEPS FROM PUBLIC KAYAK ACCESS POINT
- BIKE STORAGE
- SHOWER FACILITIES
- AMPLE ONSITE PARKING
- NEAR MULTIPLE I-5 ACCESS POINTS



Project no:	Location: EcoLake Center	Notes:	Issued to:	Revision:	Date:
 burgess design interiors + architecture 1326 Fifth Avenue Suite 500 - Seattle, WA 98101 TEL: 206.587.7120 FAX: 206.587.7122		Legend: [Solid line] EXISTING CONSTRUCTION TO REMAIN [Thick solid line] NEW INSULATED INTERIOR PARTITION CONSTRUCTION [Dashed line] NEW INTERIOR PARTIAL HEIGHT CONSTRUCTION [Line with dots] GLASS W/ FRAME [Hatched area] NEW CASEWORK / MILLWORK [Thin solid line] LINE OF UPPER CABINETS	Title:	Project Manager:	Scale:
All reproduction & intellectual property rights reserved				Sketch No.:	SP-1



EASTLAKE AVENUE E



2825 EASTLAKE AVENUE E

