

2825 EASTLAKE

2825 EASTLAKE AVE E, SEATTLE, WA 98102



BLUME COMPANY
REAL ESTATE

FOR LEASE



OFFICE SPACE AVAILABLE

SUITE 200 - 2,586 SQ FT AVAILABLE SEPT 1, 2024

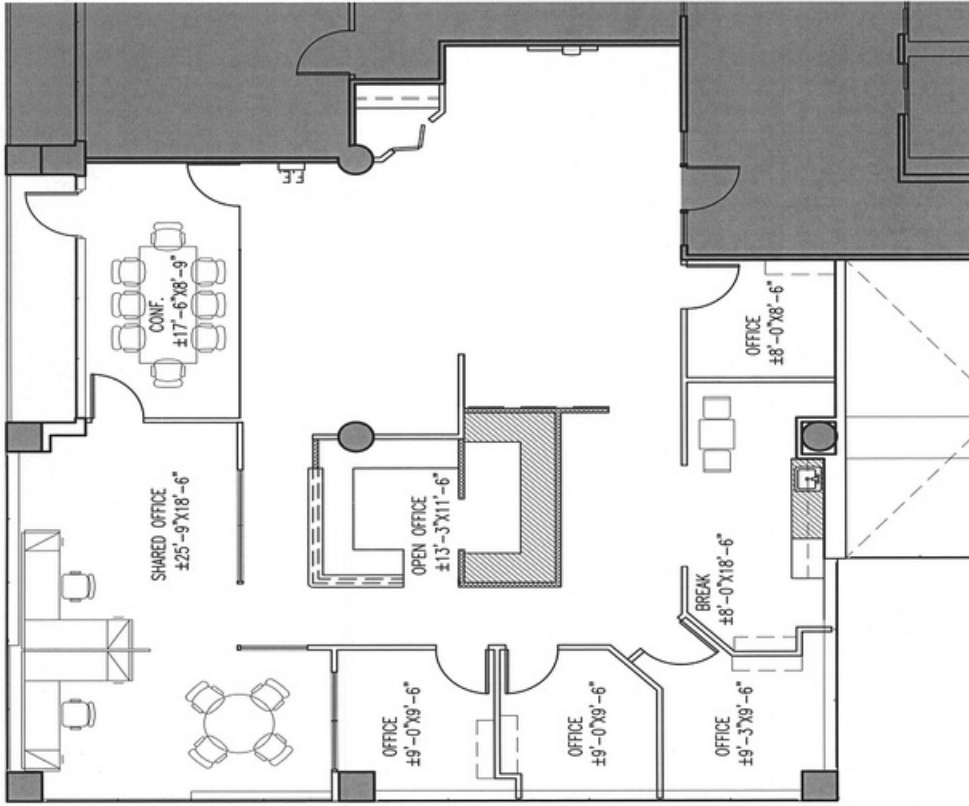
SUITE 205 - 650 SQ FT AVAILABLE

SUITE 230 - 2,850 SQ FT AVAILABLE FEB 1, 2025

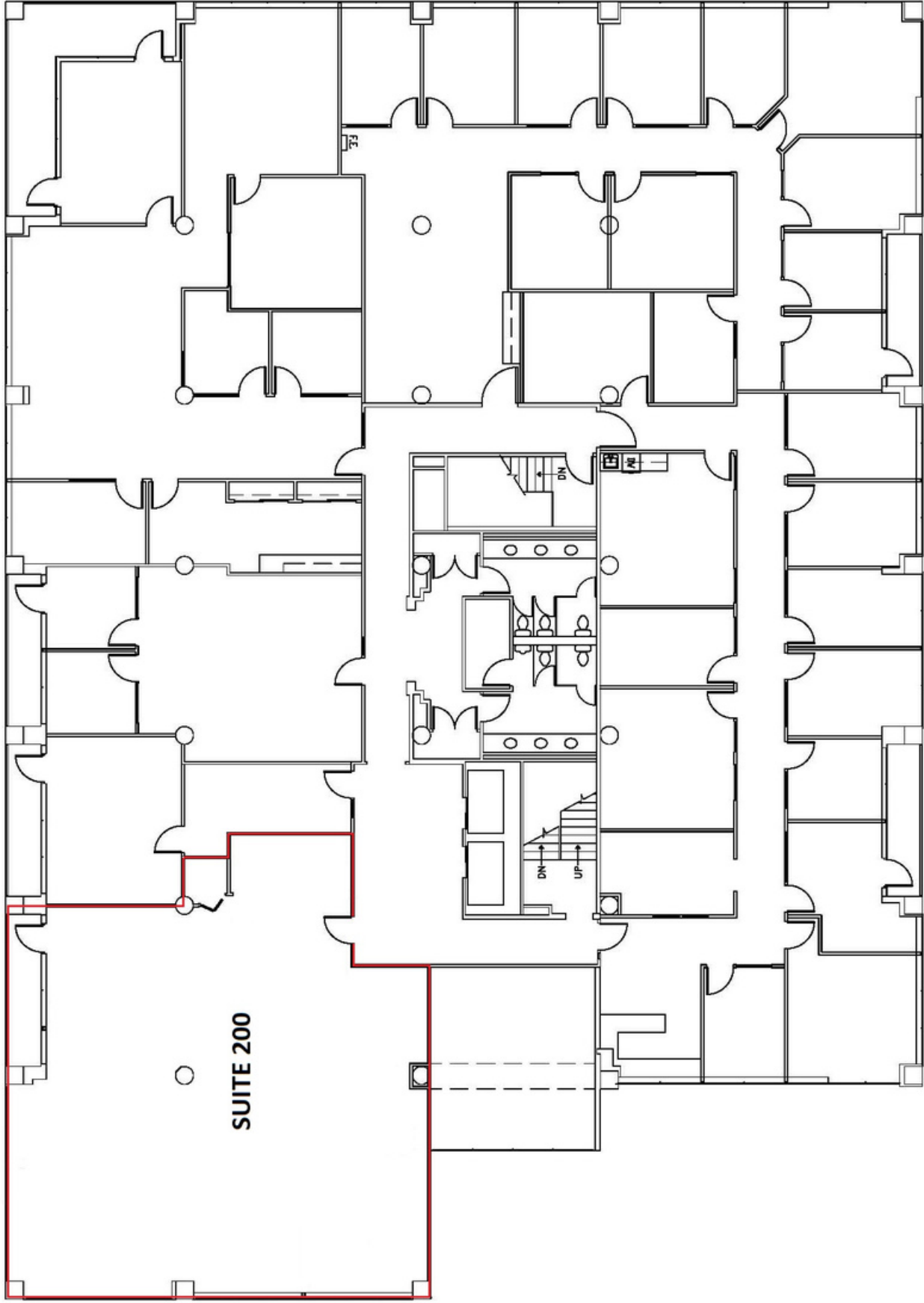
*CONTIGUOUS TOTAL (SUITE 200 AND SUITE 205) 3,236 SQ FT

EXCELLENT EASTLAKE CORRIDOR LOCATION OVERLOOKING LAKE UNION. STEPS FROM PUBLIC KAYAK ACCESS AT E ALLISON ST, A CITY OF SEATTLE DESIGNATED SHORELINE STREET END LOCATION. EASY WALK TO STARBUCKS, LITTLE WATER CANTINA, PECADO BUENO, LE FOURNIL FRENCH BAKERY & CATERING, SUSHI KAPPO TAMURA, OTTER BAR & BURGER, JOHNNY MO'S PIZZERIA AND SON OF A BUTCHER.

- SWEEPING LAKE UNION VIEWS
- STEPS FROM PUBLIC KAYAK ACCESS POINT
- BIKE STORAGE
- SHOWER FACILITIES
- AMPLE ONSITE PARKING
- NEAR MULTIPLE I-5 ACCESS POINTS



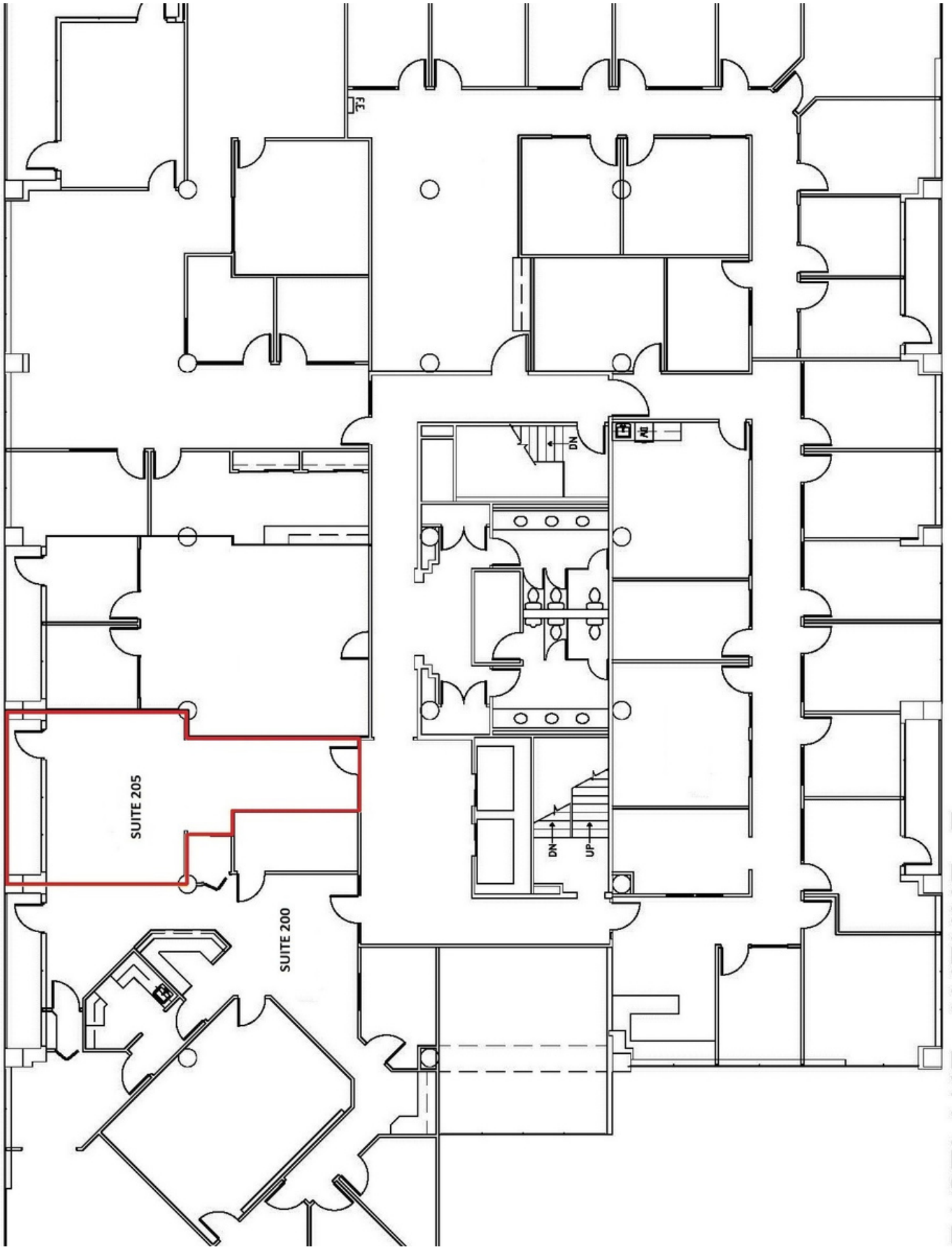
Project no:	Location: 2835 Eastlake Ave E, Seattle	Legend:	Notes:	Issued to:	Date:
		<ul style="list-style-type: none"> EXISTING CONSTRUCTION TO REMAIN NEW INTERIOR PARTIAL HEIGHT CONSTRUCTION GLASS W/ PARTIAL HEIGHT FRAME FULL HEIGHT SIDELIGHT OR FRAMELESS GLASS NEW CASEWORK / MILLWORK LINE OF UPPER CABINETS 	Revision:	Project Manager:	Scale: 1/4" = 1' - 0"
		<p>B</p> <p>BURGESS DESIGN INTERIORS + ARCHITECTURE</p>	Title:	Sketch No.:	All reproduction & intellectual property rights reserved c. 2017



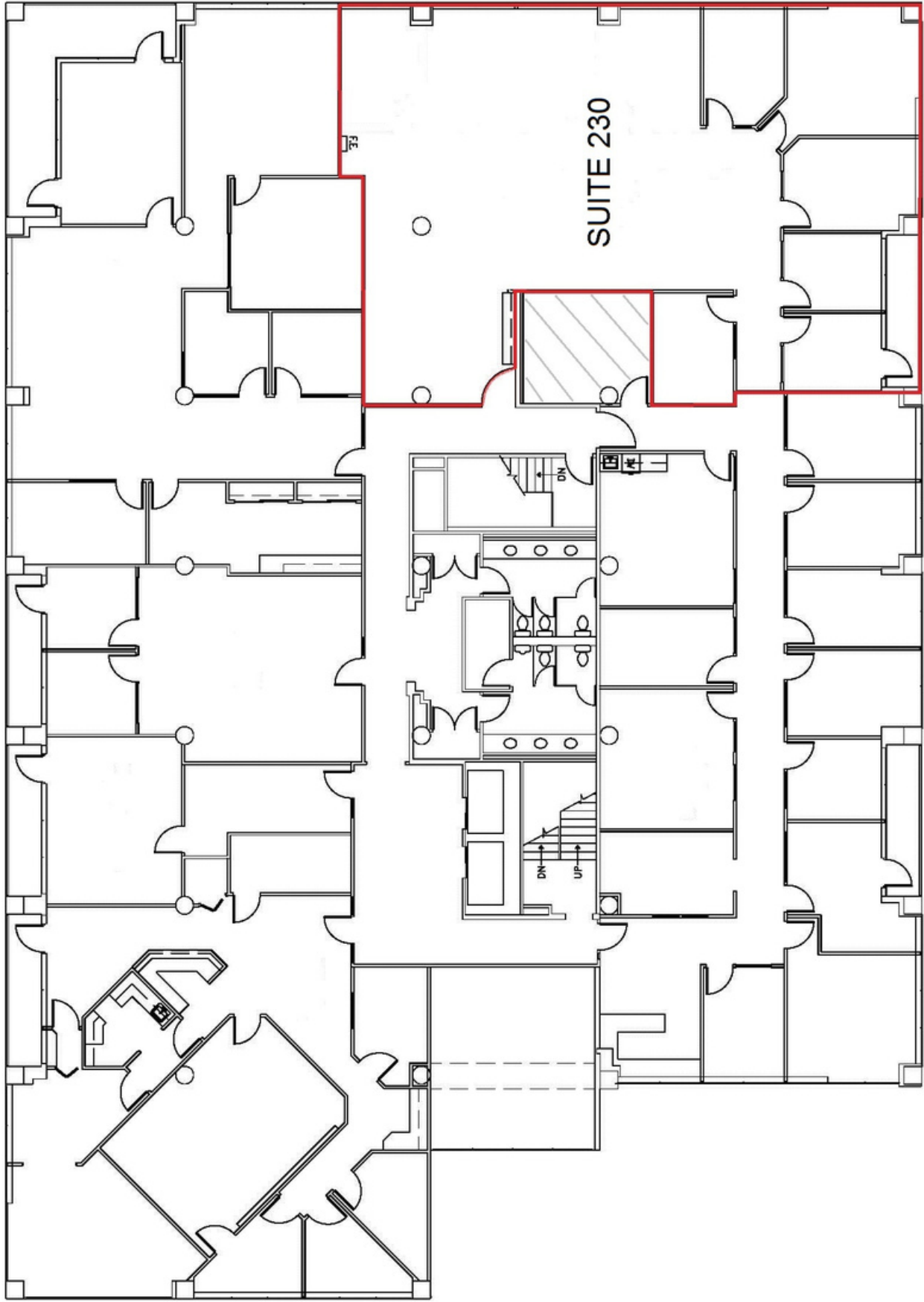
SUITE 200

2825 EASTLAKE AVENUE E





EASTLAKE AVENUE E



SUITE 230

2825 EASTLAKE AVENUE E

