

2815 EASTLAKE

A 2815 EASTLAKE AVE E, SEATTLE, WA 98102



BLUME COMPANY
REAL ESTATE

FOR LEASE



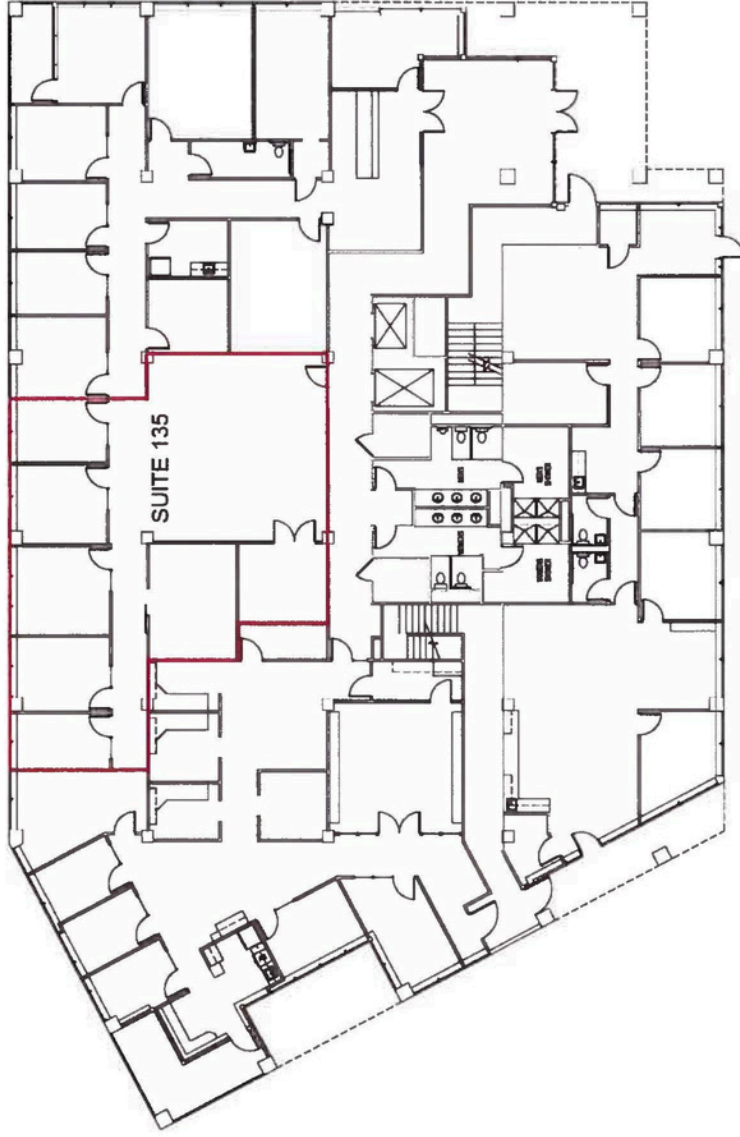
OFFICE SPACE AVAILABLE

SUITE 135 - 2,400 SQ FT

SUITE 160 - 1,500 SQ FT

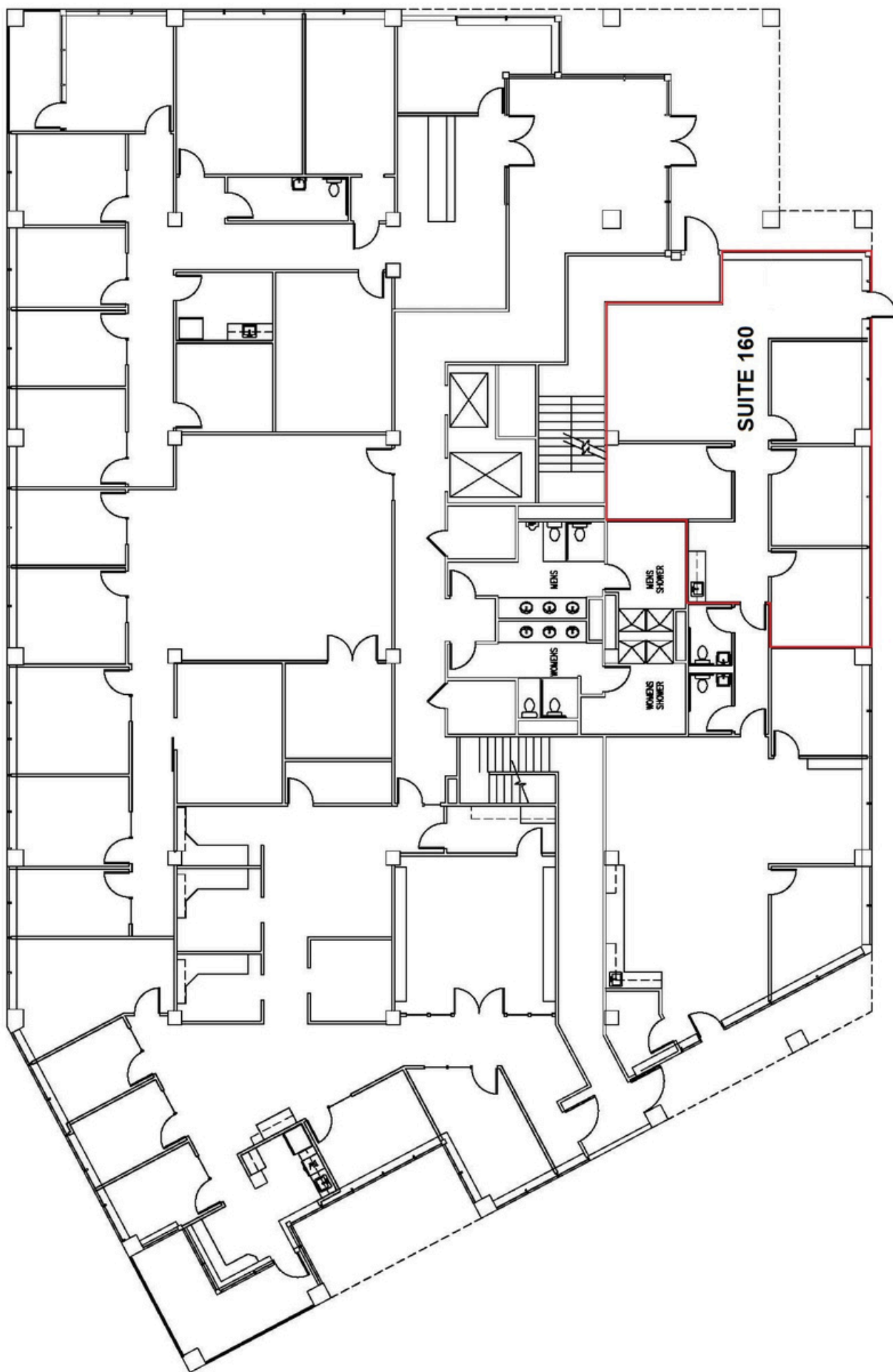
EXCELLENT EASTLAKE CORRIDOR LOCATION OVERLOOKING LAKE UNION. STEPS FROM PUBLIC KAYAK ACCESS AT E HAMLIN ST, A CITY OF SEATTLE DESIGNATED SHORELINE STREET END LOCATION. EASY WALK TO STARBUCKS, LITTLE WATER CANTINA, PECADO BUENO, LE FOURNIL FRENCH BAKERY & CATERING, SUSHI KAPPO TAMURA, OTTER BAR & BURGER, JOHNNY MO'S PIZZERIA AND SON OF A BUTCHER.

- SWEEPING LAKE UNION VIEWS
- STEPS FROM PUBLIC KAYAK ACCESS POINT
- BIKE STORAGE
- SHOWER FACILITIES
- AMPLE ONSITE PARKING
- NEAR MULTIPLE I-5 ACCESS POINTS



EASTLAKE CENTER BLDG II (SOUTH)
1ST FLOOR
SCALE: 1/4"=1'-0"





EASTLAKE CENTER BLDG II (SOUTH)
1ST FLOOR

SCALE: 1/16"=1'-0"

