

# 2815 EASTLAKE

A 2815 EASTLAKE AVE E, SEATTLE, WA 98102



BLUME COMPANY  
REAL ESTATE

**FOR LEASE**



## OFFICE SPACE AVAILABLE

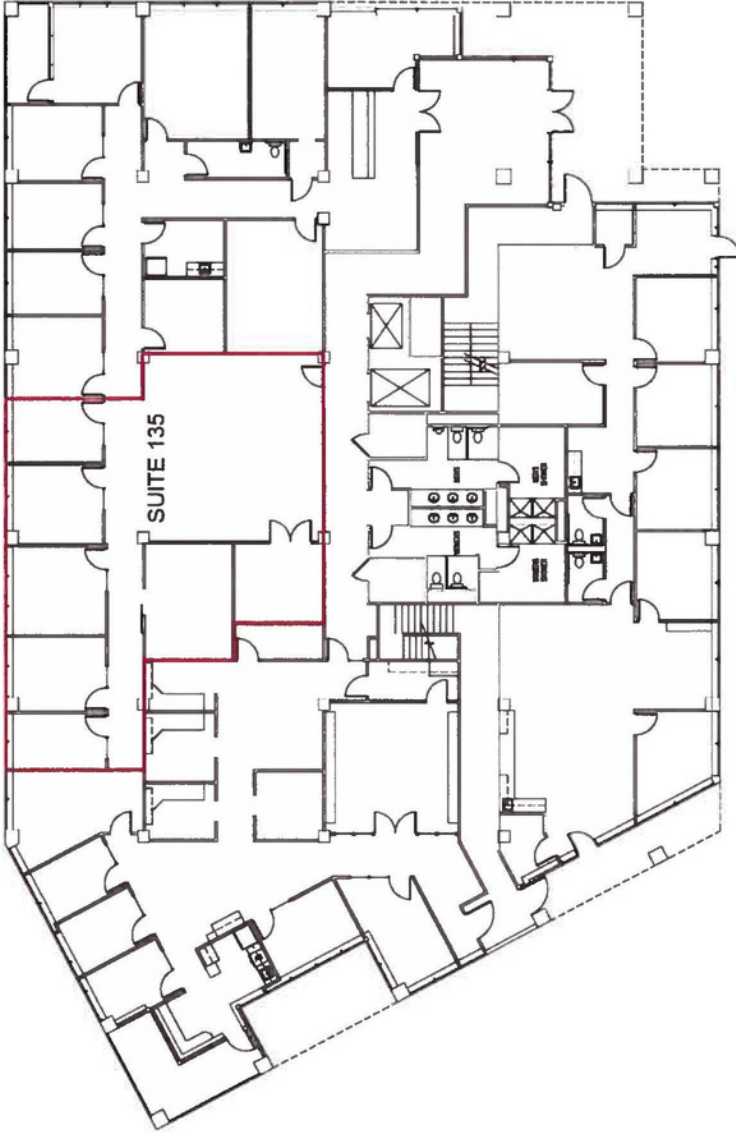
SUITE 135 - 2,400 SQ FT

SUITE 220 - 1,837 SQ FT

SUITE 240 - 1,723 SQ FT

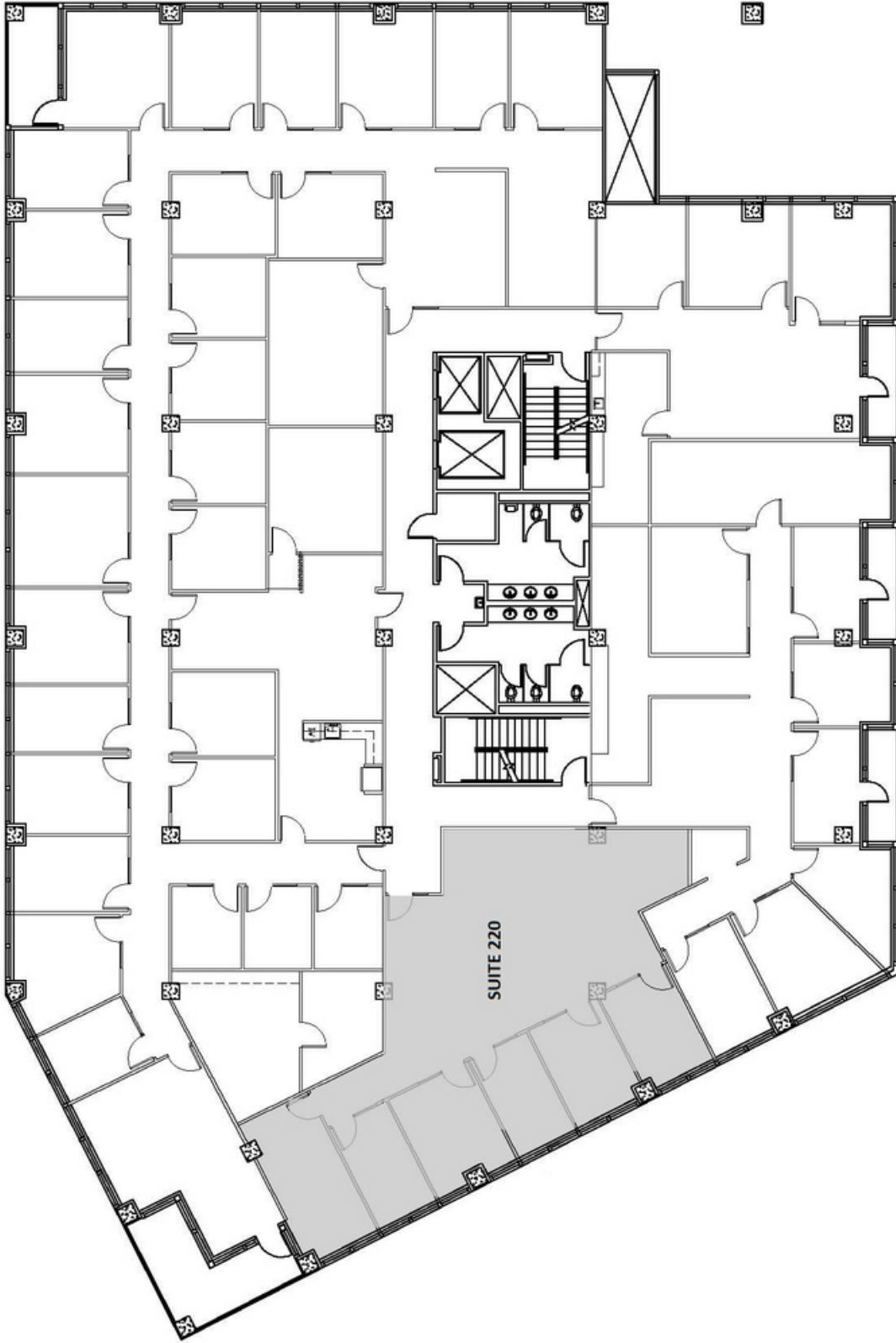
EXCELLENT EASTLAKE CORRIDOR LOCATION OVERLOOKING LAKE UNION. STEPS FROM PUBLIC KAYAK ACCESS AT E ALLISON ST, A CITY OF SEATTLE DESIGNATED SHORELINE STREET END LOCATION. EASY WALK TO STARBUCKS, LITTLE WATER CANTINA, PECADO BUENO, LE FOURNIL FRENCH BAKERY & CATERING, SUSHI KAPPO TAMURA, OTTER BAR & BURGER, JOHNNY MO'S PIZZERIA AND SON OF A BUTCHER.

- SWEEPING LAKE UNION VIEWS
- STEPS FROM PUBLIC KAYAK ACCESS POINT
- BIKE STORAGE
- SHOWER FACILITIES
- AMPLE ONSITE PARKING
- NEAR MULTIPLE I-5 ACCESS POINTS

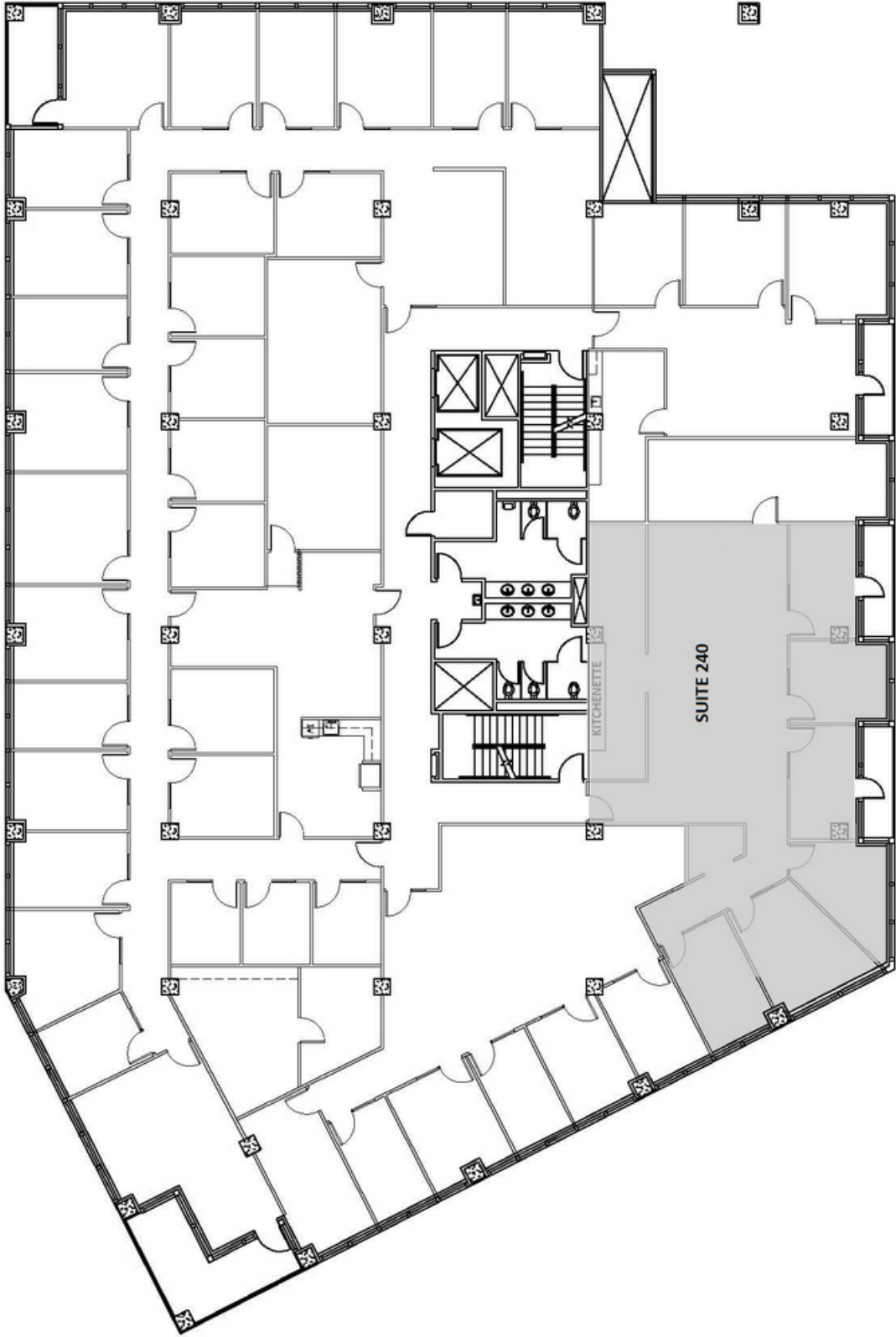


EASTLAKE CENTER BLDG II (SOUTH)  
1ST FLOOR  
SCALE: 1/8"=1'-0"





2815 EASTLAKE AVE. E - 2ND FLOOR



2815 EASTLAKE AVE. E - 2ND FLOOR