

1275 MERCER

1275 MERCER ST, SEATTLE, WA 98109



BLUME COMPANY
REAL ESTATE

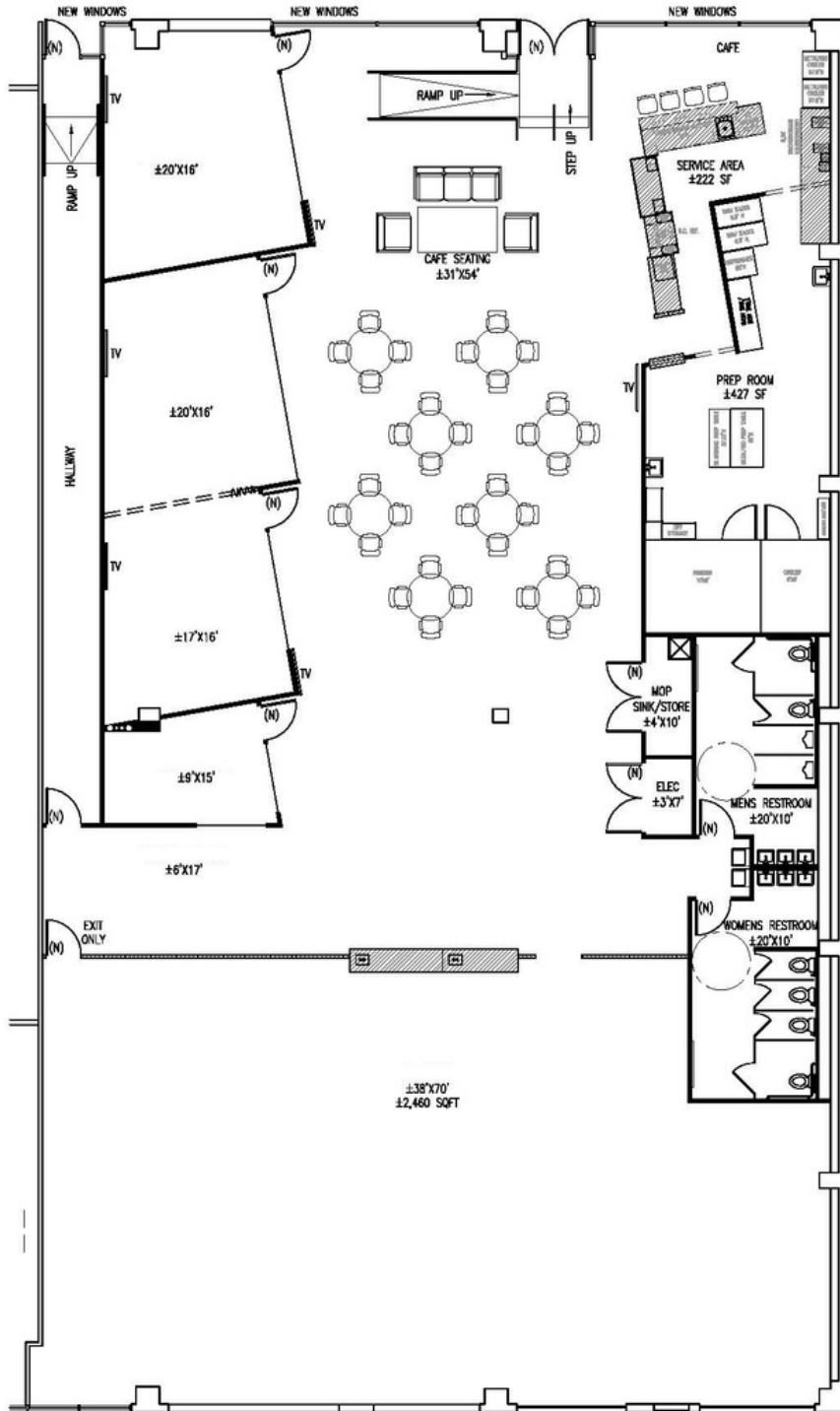
FOR LEASE



8,538 SQ FT AVAILABLE

SUITE 175 - 8,538 SQ FT AVAILABLE

- PRIME SOUTH LAKE UNION LOCATION STEPS FROM REI SEATTLE FLAGSHIP STORE, BRIGHT HORIZONS, WEWORK, FRED HUTCH AND SEATTLE CANCER CARE ALLIANCE
- 14' - 20' CEILING HEIGHTS
- BRICK & BEAM CREATIVE SPACE
- EXCELLENT OFFICE, RETAIL, SHOWROOM
- ✓ SIGNAGE OPPORTUNITY
- ✓ CLOSE PROXIMITY TO MULTIPLE I-5 ACCESS POINTS
- ✓ COMMERCIAL KITCHEN
- ✓ PRIVATE RESTROOMS



LEGEND	
	NEW INSULATED INTERIOR PARTITION CONSTRUCTION
	NEW INTERIOR PARTIAL HEIGHT CONSTRUCTION
	GLASS SIDELIGHT, SILL AT 30" AFF
	NEW CASEWORK / MILLWORK LINE OF UPPER CABINETS



THIS PLAN WAS CREATED FOR SPACE PLANNING PURPOSES ONLY; NOT INTENDED FOR PRELIMINARY BUDGET UNLESS ACCOMPANIED BY A BURGESS DESIGN WORKLETTER.

Project no: Location: 1275 Mercer Street, Seattle

Notes: 1. PROVIDE NFPA-13 QUICK RESPONSE SPRINKLER HEADS THRU-OUT SPACE.

Issued to: Title: Space Plan

Revision: Date:

06.09.12
07.13.12
07.27.12
09.06.12 VB
10.25.12

Drawn by: Scale: 3/32" = 1' - 0"

Sketch No.:

SP-1



burgess design interiors architecture

1326 Fifth Avenue, Suite 400, Seattle Washington 98101 T: (206) 587.7120 F: (206) 587.7122

All reproduction & intellectual property rights reserved c 2012

FURNITURE SHOWN FOR DESIGN INTENT ONLY. ALL FURNITURE DESIGNED BY TENANT'S FURNITURE VENDOR.