

1100 NE 45TH ST

1100 NE 45TH STREET, SEATTLE, WA 98105



BLUME COMPANY
REAL ESTATE

FOR LEASE

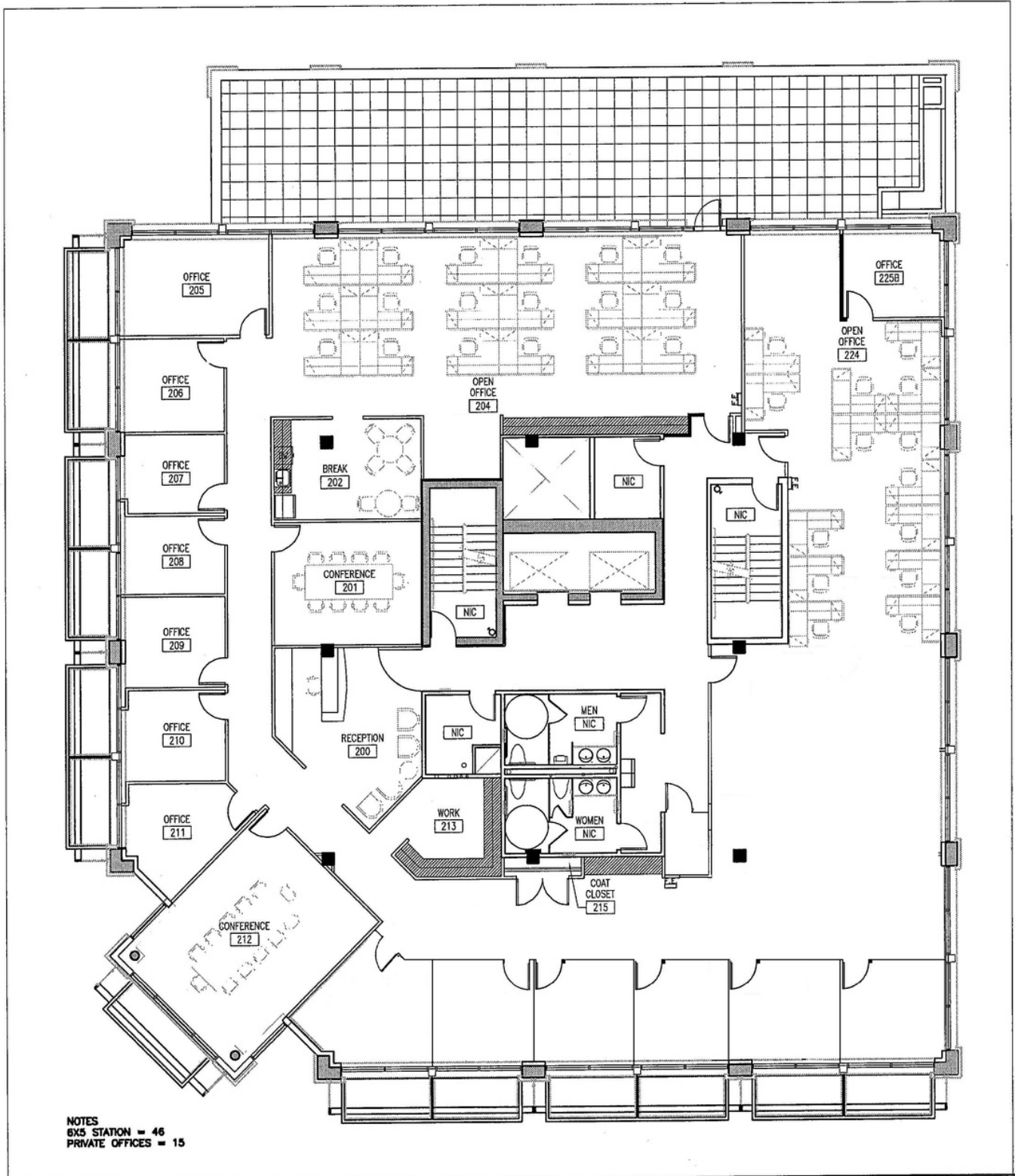


UP TO 27,875 SQ FT
OFFICE SPACE AVAILABLE

**TWO BLOCKS FROM THE UDISTRICT
LIGHT RAIL STATION**


- 98 WALK SCORE RATING
- IMMEDIATE PROXIMITY TO I-5
- UNDERGROUND GARAGE PARKING
- NEW STATE OF THE ART BIPOLAR IONIZATION AIR PURIFICATION SYSTEM AND MERV-13 FILTER INSTALLATION.

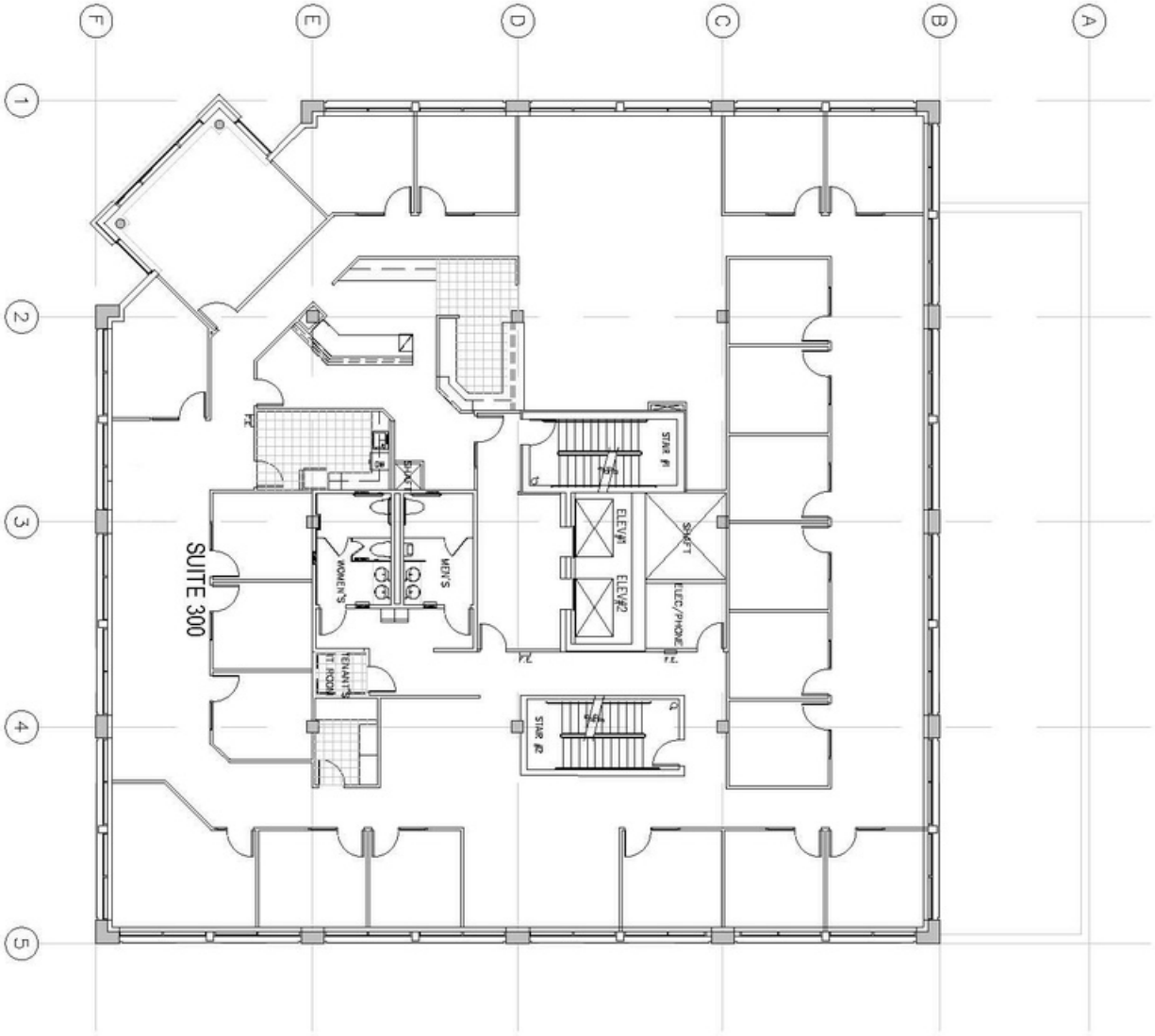
- ✓ FLOOR 2 (DIVISIBLE) 10,200 SQ FT
- ✓ FLOOR 3 (DIVISIBLE) 10,151 SQ FT
- ✓ SUITE 400 2,094 SQ FT
- ✓ SUITE 405 5,430 (AVAILABLE OCT 1)
- ✓ BIKE STORAGE AND BUILDING SHOWERS

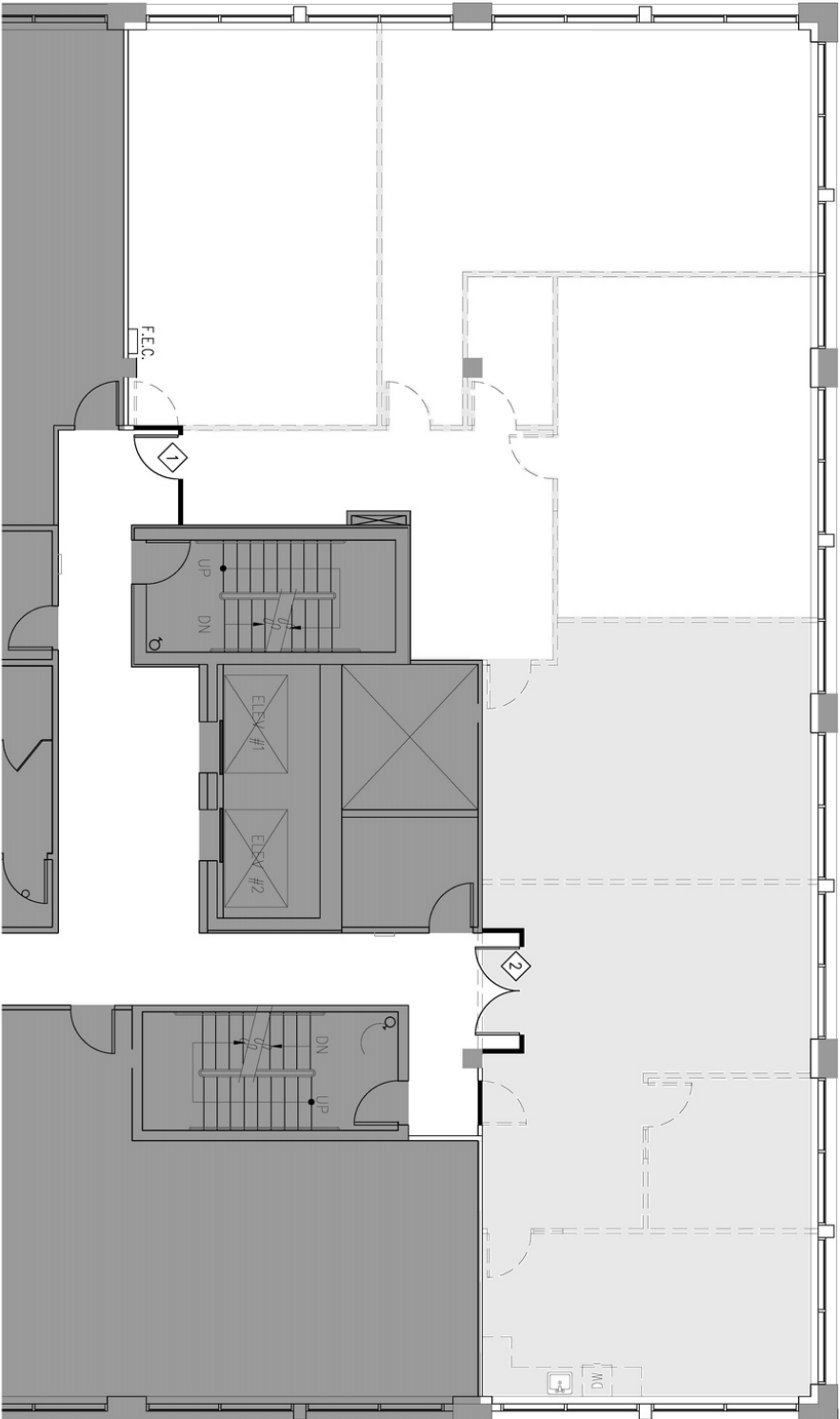


NOTES
 6x5 STATION = 46
 PRIVATE OFFICES = 15

Project no:	Location: 45th street Plaza, second floor	Issued to:	Date:
-------------	--	------------	-------

 <p style="margin-top: 10px;">burgess weaver DESIGN GROUP</p> <p style="font-size: small; margin-top: 10px;">1326 Fifth Avenue Suite 500 Seattle . Washington 98101 2 0 6 5 8 7 . 7 1 2 0 T 2 0 6 5 8 7 . 7 1 2 2 F</p>	Scale: <div style="text-align: center; margin-top: 5px;">1/16" = 1'-0"</div>	Sketch No. <div style="text-align: center; margin-top: 5px;">SP-01</div>
	Title: <div style="text-align: center; margin-top: 10px; font-size: large;">Space plan</div>	





Project no: 20-0114-00
 Location: 45TH STREET PLAZA, STE 400



BURGESS DESIGN
 INTERIORS + ARCHITECTURE

All reproduction & intellectual property rights reserved c 2017

- Legend:
- EXISTING CONSTRUCTION TO REMAIN
 - EXISTING CONSTRUCTION TO BE REMOVED
 - NEW INSULATED INTERIOR PARTITION CONSTRUCTION

- Notes:
- 1 PROVIDE NEW BUILDING STANDARD EXIT DOOR.
 - 2 PROVIDE NEW BUILDING STANDARD DOUBLE ENTRY DOOR.

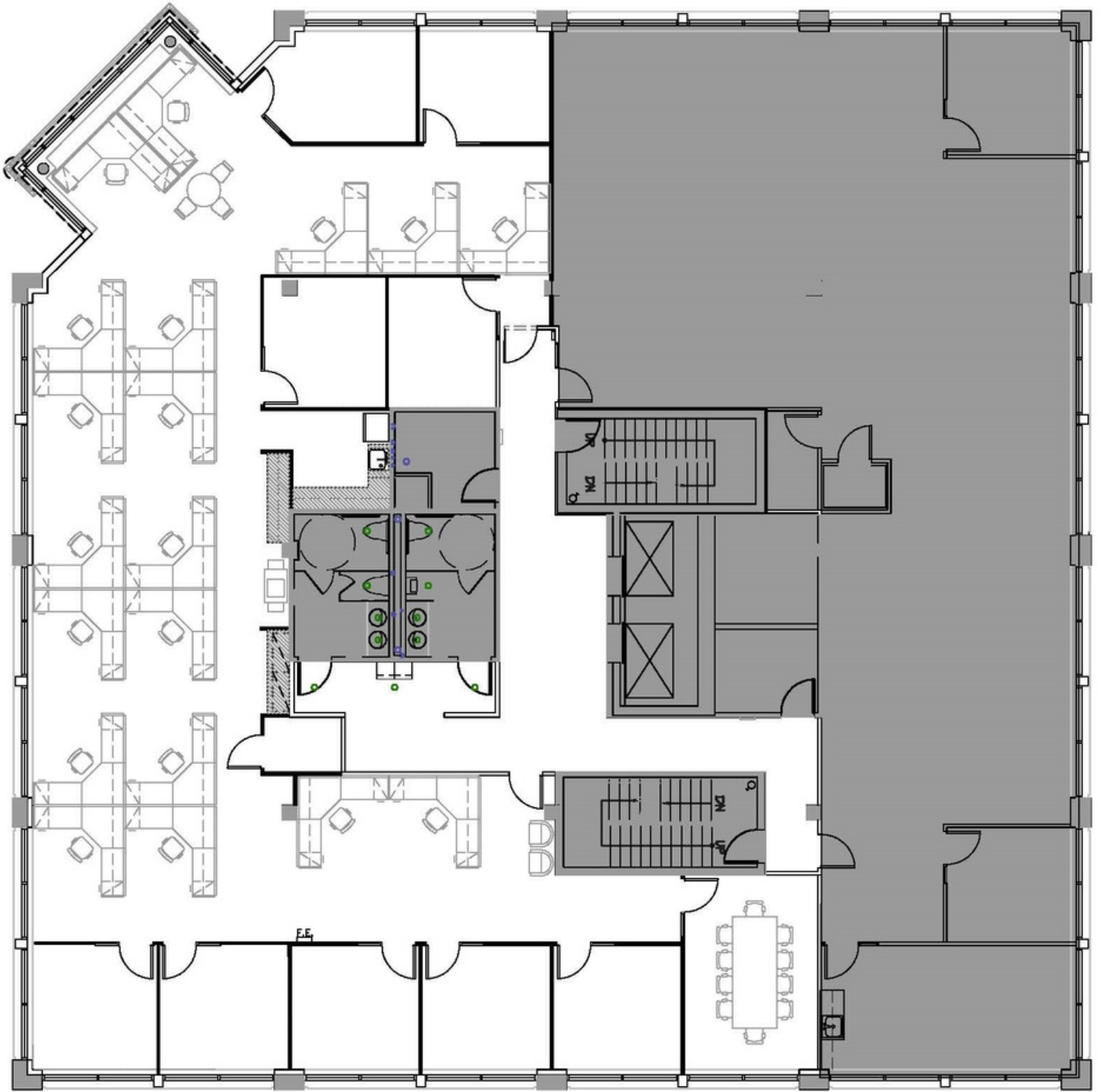
Issued to: **BLUME**

**45TH STREET PLAZA 4TH FLOOR
 DEMISING SPACE PLAN**

THIS PLAN WAS CREATED FOR SPACE PLANNING PURPOSES ONLY; NOT INTENDED FOR PRELIMINARY BUDGET UNLESS ACCOMPANIED BY A BURGESS DESIGN WORKLETTER. FURNITURE SHOWN FOR DESIGN INTENT ONLY. ALL FURNITURE DESIGNED BY TENANT'S FURNITURE VENDOR.

Date: 02.19.20
 Project Manager: TS

Scale: 1/8" = 1'-0"
 Sketch No.: SP-1



1100 NE 45TH ST, STE 405